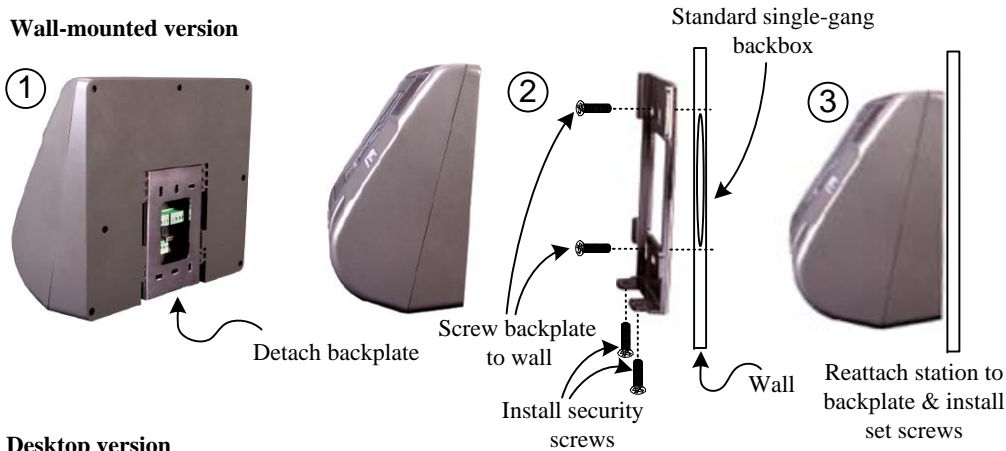
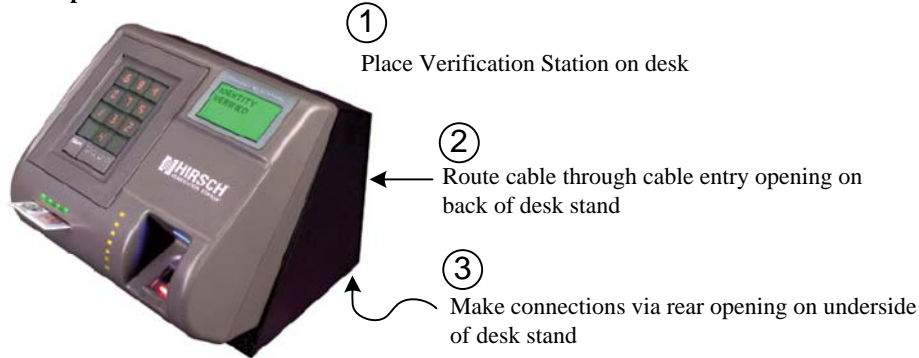


## Mounting the Hirsch Verification Station

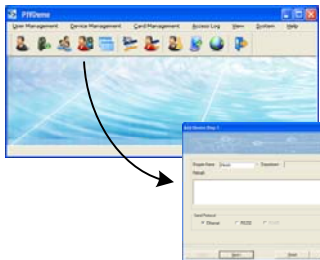
### Wall-mounted version



### Desktop version



## Configuring the Station



Use Verification Station Configuration program supplied on CD to configure the RUU. Refer to the *Verification Station Configuration Guide* for full details.

1900 Carnegie Ave. Bldg. B  
Santa Ana, CA 92705-5520  
(949) 250-8888  
www.HirschElectronics.com



© Hirsch Electronics Corp. All Rights Reserved



# Verification Station™ (RUU) Quick Installation Guide



### Specifications & Ratings (summarized)

#### General

- RUU contains:
- Biometric Sensor
  - Contactless Card Reader
  - Contact Card Reader
  - ScramblePad
  - Compatible with Cogent Systems BioGate family of biometric readers in non-FIPS 201 mode
  - Reads NIST SP 800-73-1 End Point Cards in FIPS 201 mode

#### Communications

- LAN Port: Ethernet TCP/IP  
- 10/100  
Serial Ports: RS-232, RS-485  
- Baud Rate: 9600 – 115 Kbps programmable  
Wiegand Port: 75 bit with parity standard  
- User programmable up to 128 bits in non-FIPS mode

#### Electrical

- Wiring types:  
- 2 pair, stranded, twisted, overall shield for RS-485, RS-232 and Wiegand, 22 gauge minimum  
- CAT5/CAT6 for Ethernet  
Wiring Distance: Refer to controller specifications  
Display: 16 character X 6 lines

#### Electrical (cont.)

- Contact Card Indicator: Dynamic 3 color LED for status  
Biometric Indicator: Dynamic 3 color LED bank for status and blue hood LED  
Keypad Display: 7 segment  
- RUU-201: Red LED  
- RUU-201-HI: White incandescent  
Keypad Annunciation:  
- Audible: 7-tone prompt on pressing START, and 1 tone feedback for each button  
Power Requirements:  
12-15 VDC @ 600 mA, terminal block, power jack, or RJ45 PoE (standard configuration)  
• Option for 12-15VDC terminal block and power jack  
• Option for 48VDC 802.3af PoE

#### Physical

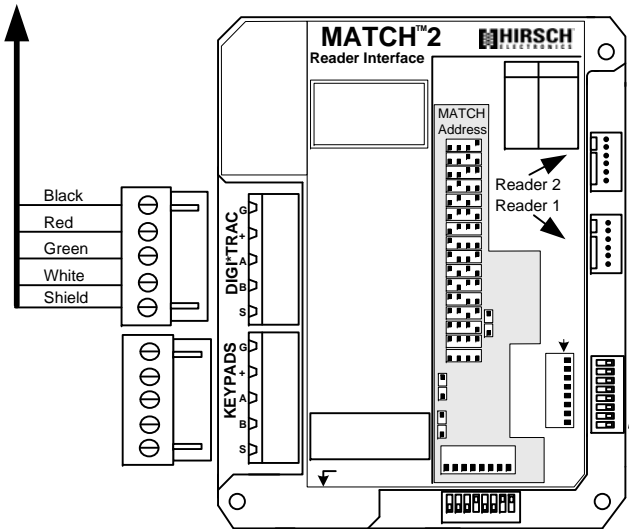
- Housing: Durable ABS One-Piece Molded Keyface on Keypad Recommended Mounting  
- ADA 48"  
- Follow local codes  
Dimensions:  
- 8.46"H x 9.45"W x 4.63"D (214.88mm x 239.97mm x 117.6mm)  
Shipping Weight: 2 lb. (0.9kg)

### Available Versions

Model #	Version & Model	Model #	Version & Model
RUU-201	PIV – Wall mount	RUU-GEN	General purpose – Wall mount
RUU-201-HI	PIV – High Intensity	RUU-GEN-HI	General purpose – High Intensity
RUU-201-DT	PIV – Desktop	RUU-GEN-DT	General purpose – Desktop
RUU-CAC	CAC – Wall mount		
RUU-CAC-HI	CAC – High Intensity		
RUU-CAC-DT	CAC – Desktop		

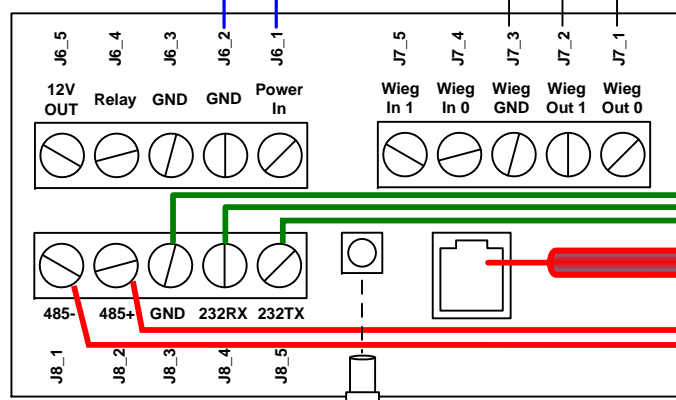
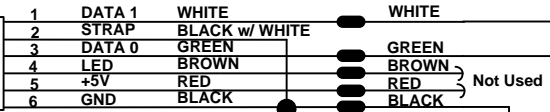
# Wiring the Hirsch Verification Station

## To DIGI\*TRAC Controller



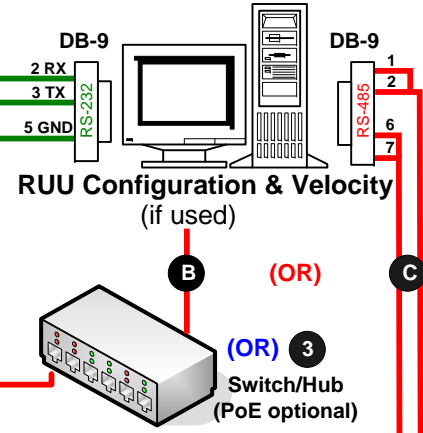
18 for GSA + Pass-through (no parity)  
 20 for GSA + MATCH code  
 21 for GSA + Pass-through (with parity)

## Controller connection (Wiegand) (if used)



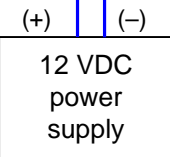
RUU Rear View

**Admin port connection**  
 Future diagnostic port.  
**A** RS-232 serial connection.



RUU Configuration & Velocity  
(if used)

TCP/IP



(OR)  
**DC Power Supply**  
 (Plug-In Type)

(External Hardwired Type)

RUU Power Consumption
12VDC @ 600mA max.
48VDC @ 15.4 watts max. (PoE)

## Power connection

To power the RUU, you can use one of the following options:

- Using 12 VDC power supply. If you employ this method, use a non-PoE Ethernet connection. (Standard)
- Use supplied power supply. If you employ this method, use a non-PoE Ethernet connection. (Desktop)
- Use a PoE Switch/Hub to supply power through a CAT 5 or 6 cable. (Optional)

When using option **3**, power options **1** and **2** are not necessary.

## Network connection

To configure and network the RUU, connect to the computer using one of these options:

- Ethernet connection.  
**Note:** When connecting directly to a computer without a hub or switch, use crossover cable.
- RS-485 connection.

For configuration information, refer to *Verification Station Configuration Guide*.